



BIO

**FITOCLIMA
600 & 1200 BIO**

PLANT GROWTH RESEARCH 'REACH-IN'
ENVIRONMENTAL CHAMBERS




aralab





ARALAB is a company specialized in designing, developing, manufacturing and servicing of high quality climatic chambers and controlled environment rooms.

Since 1985 we have been perfecting ways to create and control temperature, humidity, light, air flow and many other environmental conditions.

Only the highest quality components are used to manufacture our chambers so customers can have the best equipment for their research and testing purposes.

Control the environment, your own climate.



FitoClima Bio chambers provide the control and flexibility to meet the evolving needs of researchers and research requirements through time.

COMMON APPLICATIONS INCLUDE

- PLANT GROWTH
- TISSUE CULTURE / IN-VITRO
- ARABIDOPSIS
- GERMINATION
- ALGAE RESEARCH
- ENTOMOLOGY
- INSECT REARING
- OTHER LIFE SCIENCES APPLICATIONS



Certified ISO:9001 for its Quality Management System



KEY FEATURES

- Ready to use. No assembly needed
- Minimal footprint for efficient use of laboratory space
- Adaptive future proof design, with easily removable and height adjustable shelves and changeable light canopies with multiple intensities
- Wide temperature and humidity working ranges
- Research protection, with configurable high / low temperature and humidity alarms and automatic remote notifications
- Stainless steel interior for maximum durability and easiness of cleaning
- Multiple lighting options to suite any research requirements and stages of plant development

TECHNICAL SPECIFICATIONS

● ● ● ● TECHNICAL DATA FOR FITOCLIMA 600 & 1200 BIO CHAMBERS

TEMPERATURE RANGE ^[1]		LIGHTS ON: +5°C to +45°C LIGHTS OFF: 5 °C to +45°C												
EXTENDED TEMPERATURE RANGE		LIGHTS ON: -10°C LIGHTS OFF: -25°C												
TEMPERATURE PRECISION		± 0,5°C												
TEMPERATURE UNIFORMITY		± 1,0°C												
HUMIDITY RANGE ^[1]		LIGHTS ON: 40 to 80% RH LIGHTS OFF: 40 to 90 % RH												
HUMIDITY PRECISION		± 1% RH												
HUMIDITY UNIFORMITY		± 2% RH												
SHELVES / LIGHT BANKS ^[2]		FitoClima 600: 1 to 4 shelves with controlled lighting FitoClima 1.200: 2 to 8 shelves with controlled lighting												
GROWTH HEIGHT		Adjustable from 150mm up to 1.330 mm												
GROWTH AREA		0.32 m ² per shelf (630m x 510mm)												
LIGHT TYPES AND INTENSITIES ^[2a]		Maximum number of light shelves by light type												
Approximate intensity per shelf 10%) 200 or 300 μ moles /m ² s 400 or 600 μmoles /m ² s Up to 600 μmoles /m ² s 1.000 μmoles /m ² s ^[2b] Up to 300 μmoles/m ² s	Light Type 4 cool white fluorescent or white LED tubes 8 cool white fluorescent or white LED tubes Multiple spectra LED options High performance fluorescent or LED Vertical LED s installed on the side walls	<table border="1"> <thead> <tr> <th>FitoClima 600</th> <th>FitoClima 1.200</th> </tr> </thead> <tbody> <tr> <td>4</td> <td>8</td> </tr> <tr> <td>2 or 3</td> <td>4 or 6</td> </tr> <tr> <td>2 or 3</td> <td>4</td> </tr> <tr> <td>1</td> <td>2</td> </tr> <tr> <td>N/A</td> <td>N/A</td> </tr> </tbody> </table>	FitoClima 600	FitoClima 1.200	4	8	2 or 3	4 or 6	2 or 3	4	1	2	N/A	N/A
FitoClima 600	FitoClima 1.200													
4	8													
2 or 3	4 or 6													
2 or 3	4													
1	2													
N/A	N/A													
AIRFLOW		Uniform 0,2 m/s across the shelves Adjustable by setpoint % at the controller interface												
INTERNAL VOLUMES		600 or 1.200 liters												

● ● ● ● FITOCLIMA MODELS REFERENCE - STANDARD CONTROLLED ENVIRONMENT VARIABLES

FITOCLIMA 600/1200 PLH (or PLH-V)		Temperature, Light and Humidity (or Vertical Lights)
FITOCLIMA 600/1200 PL (or PLH-V)		Temperature and Light (or Vertical Lights)
FITOCLIMA 600/1200 PH		Temperature and Humidity
FITOCLIMA 600 PDH		Temperature and Low Humidity (ambient down to 5% RH)

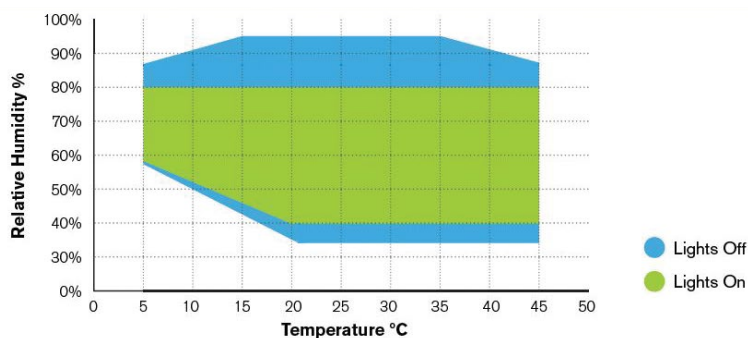
[1] Temperature and humidity ranges with all lights ON are affected by chosen light configuration and configured light intensity. Due to heat dissipation from the lamps, high light intensities will affect high humidity and low temperature ranges

[2] Standard included light configuration: 4 fluorescent or LED tubes in each shelf. 3 light shelves on the FitoClima 600 and 6 on the FitoClima 1.200. FitoClima 600 with Vertical LED Lights option has 5 wire shelves (1,65m²) included as standard, and up to 10 can be fitted optionally.

[2a] Measurements at 150mm from lamps at 25°C. At lower temperatures light intensities will decrease, except with LED lighting options



[2b] Intensity available with "High Performance lighting (1.000 μmole/m²s) kit" as an option

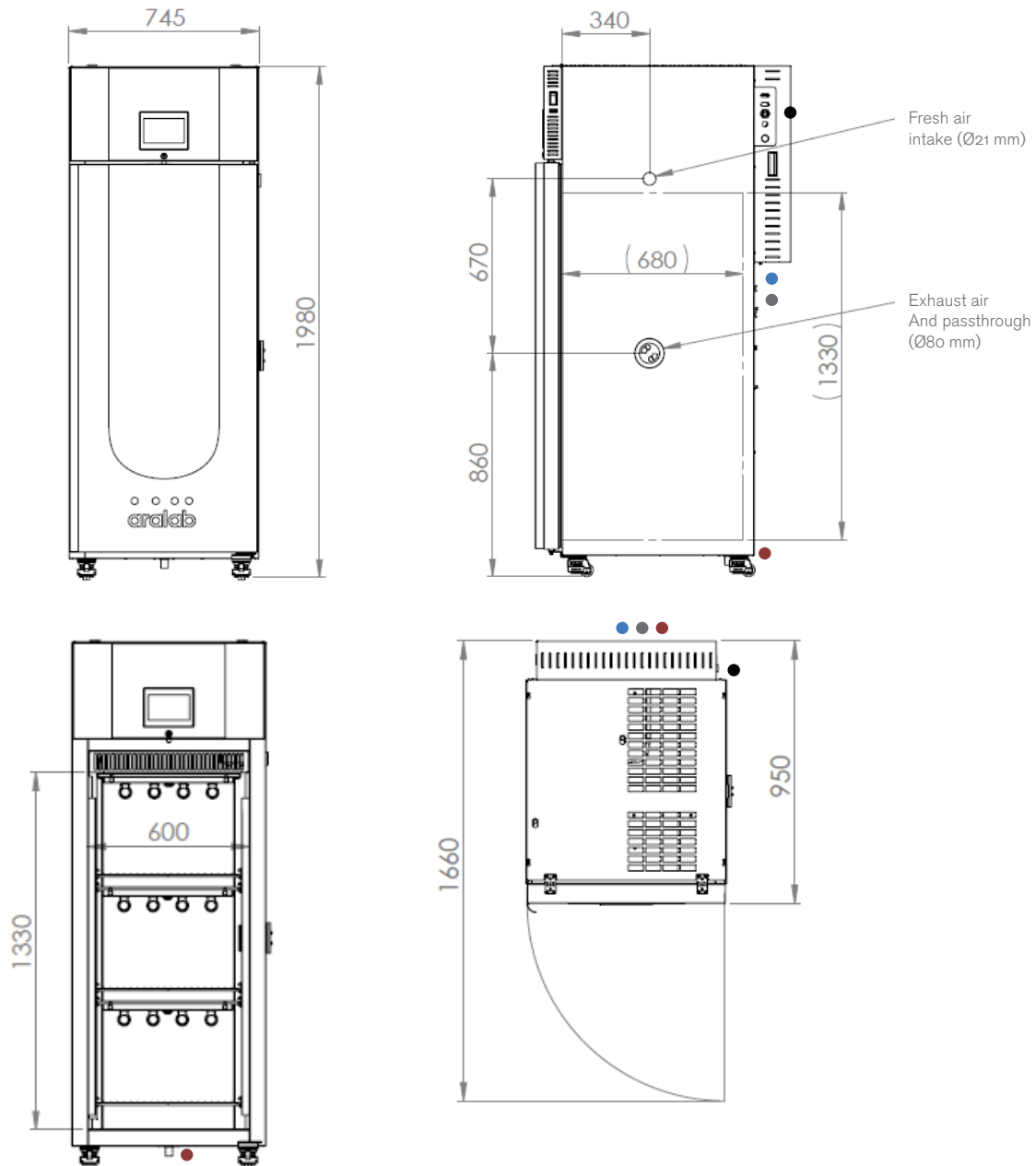
● ● ● ● TEMPERATURE & HUMIDITY WORKING RANGE







DIMENSIONS AND DRAWINGS

● ● ● ● FITOCLIMA 600

EXTERNAL DIMENSIONS (HxWxD) (mm)		1.980 x 745 x 950
INTERNAL DIMENSIONS (HxWxD) (mm)		1.330 x 600 x 680





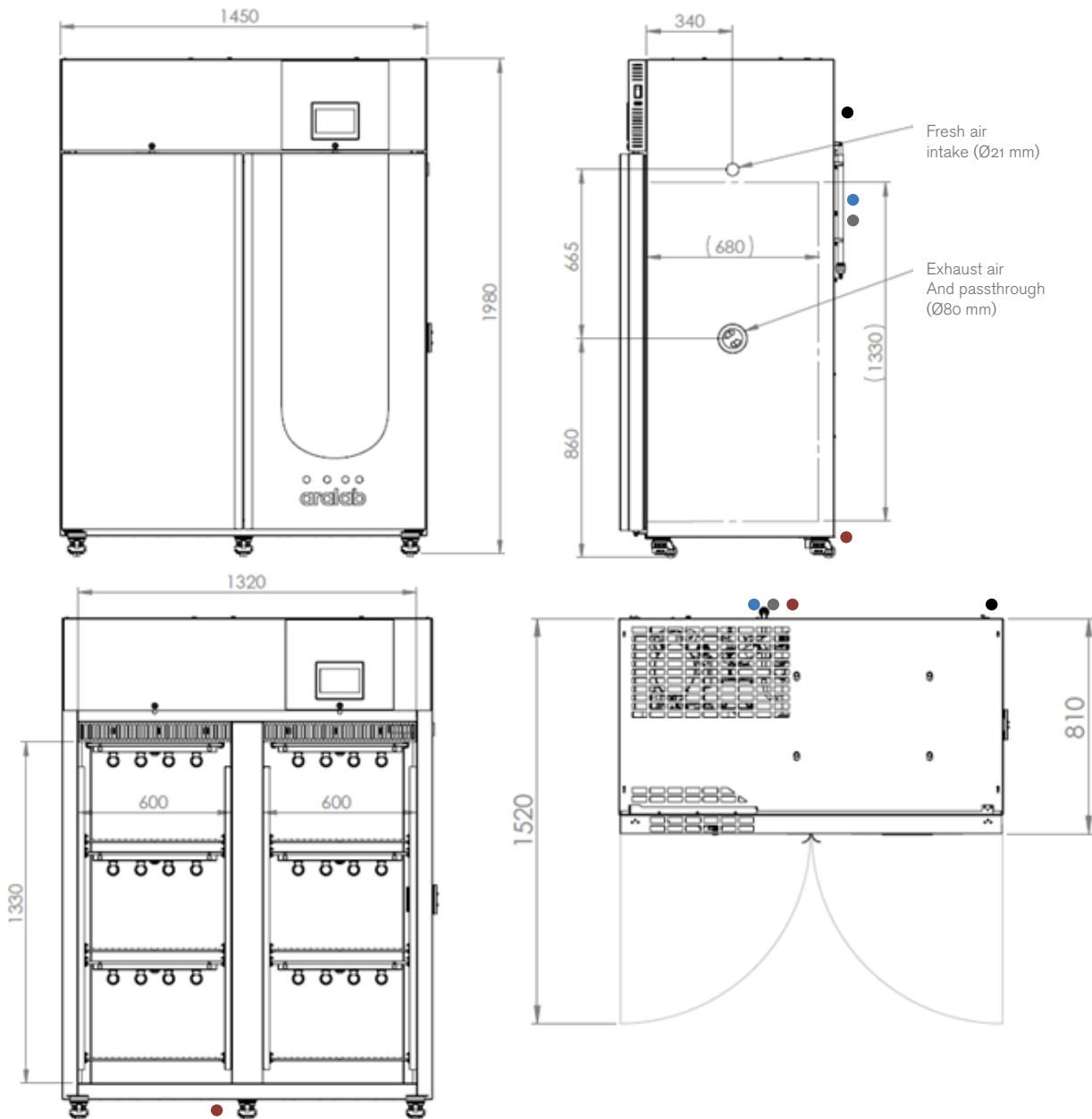
- Standard refrigeration system is air cooled
- Services hub installation needs:
 -  ½" demineralized water supply
Conductivity: <math><40\mu\text{S}/\text{CM}</math>
Pressure: 1-5 BAR
 -  50mm water drain at floor level

-  Electrical cabinet installation needs:
Supply power: 230VAC, 50Hz, 16A / Single Phase + Neutral + Ground
Electrical protection: Circuit breaker 16A + N with 300mA differential
 -  RJ45 communication port

DIMENSIONS AND DRAWINGS

● ● ● ● FITOCLIMA 1.200

EXTERNAL DIMENSIONS (HxWxD) (mm)		1.980 x 1.450 x 810
INTERNAL DIMENSIONS (HxWxD) (mm)		1.330 x 1.320 x 680



- Standard refrigeration system is air cooled
- Services hub installation needs:
 - ½" demineralized water supply
Conductivity: <math><40\mu\text{S}/\text{CM}</math>
Pressure: 1-5 BAR
 - 50mm water drain at floor level

- Electrical cabinet installation needs:
 - Supply power:
230VAC, 50Hz, 16A / Single Phase + Neutral + Ground
 - Electrical protection: Circuit breaker 16A + N with 300mA differential
 - RJ45 communication port

FITOCLIMA MODELS CONFIGURATIONS

MULTI-TIER

- Multiple tiers of shelves inside, with easy height adjustment
- Suitable for small and medium plants, insect rearing or tissue culture



VERTICAL LIGHTS

- Lights installed on the side walls of the chamber
- Allows increased storage and growth area
- Suitable for insectaries, tissue culture and plant growth

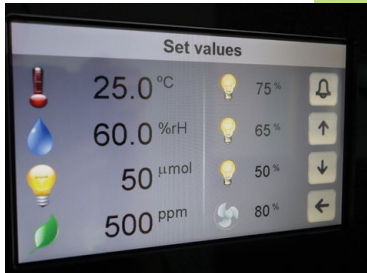


SINGLE-TIER

- High performance lighting, allowing +1.000 μ moles intensity
- Suitable for medium to tall plants



EQUIPMENT DESCRIPTION



CONSTRUCTION & CONTROL

- Multi-color 7-inch touch-screen ClimaPlus© controller
- Open door alarm with configurable time-out function
- Free slots for connecting and integrating external devices (CO2 control, Automatic Irrigation/Aeration, Shakers or other) with the ClimaPlus controller
- Accessible technical compartment for faster maintenance procedures
- Highly resistant stainless-steel interior
- Polyurethane insulation
- Exterior zinc plated steel and gray epoxy paint
- Pivoting door(s) with spring lock, magnetic gasket and safety lock(s)
- 4 and 5 built-in casters brakes
- 80mm Ø side entry port



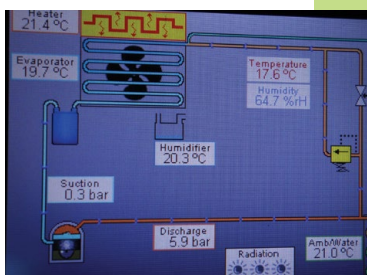
ENVIRONMENTAL CONTROL

- Air-cooled, CFC free, mechanical refrigeration by hermetic compressor
- Dual heating technology with hot gas by-pass and stainless steel electric heaters
- Humidification by ultrasonic generator with automatic water level control and self-cleaning function
- Dehumidification by condensation on the cooling system evaporator
- PT100 RTD temperature sensor and capacitive humidity sensor



AIR FLOW

- Dynamic airflow with EC (variable) blower
- Air renovation through adjustable lateral port-holes
- Uniform air velocity of 0.2 meters per second across shelves
- Airflow speed adjustable on the ClimaPlus© controller

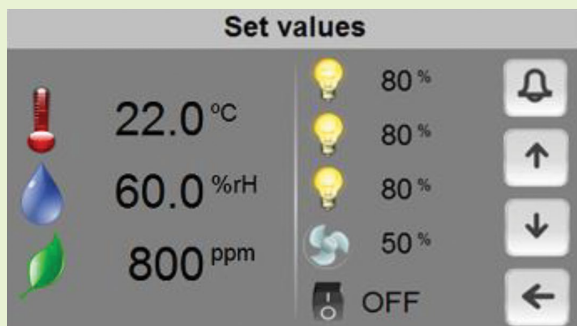
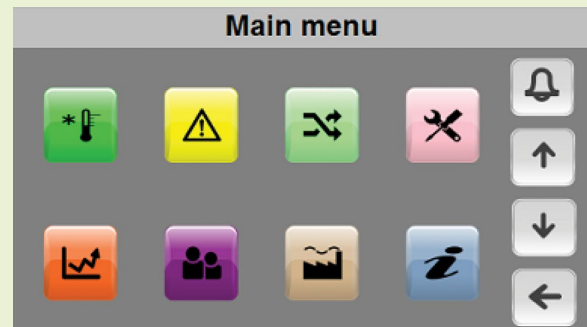


RESEARCH PROTECTION AND AUTOMATIC DIAGNOSTICS

- Independent thermostats for maximum and minimum temperature limits
- Automatic cut-off function, in case of excessive heating or cooling
- Configurable maximum and minimum temperature and humidity limits
- Visual and audible alarms for temperature and humidity limits
- New synoptic diagram function: a self-diagnostics tool that checks all active components of the system allowing for faster procedures and minimizing any possible downtimes

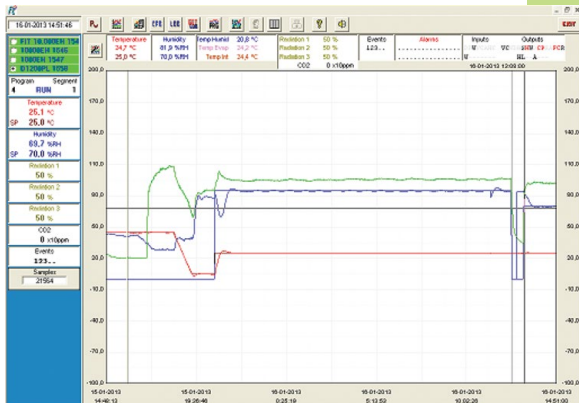
CLIMAPLUS CONTROLLER

- Programmable Logic Controller exclusively developed by Aralab for FitoClima chambers
- Easy to use touch-screen interface
- 190mm x 150mm multicolor display
- Controls every environmental variable available for any specific FitoClima model (Temperature, Humidity, Lights, Airflow, CO₂ and connected external devices)
- Friendly program editor for creating 32 programs of 24 segments each, allowing the design of complex and comprehensive climatic simulation programs
- Password protection of the controller functions
- Content and research protection feature, with configurable High and Low Temperature and Humidity alarms and automatic notifications
- Managing, monitoring and recording of all alarms
- Non-volatile memory, allowing the automatic restart of previously defined set-points or on-going programs due to power failure, without losing data
- Real-time monitoring of all the functions and active components of the equipment, allowing for a fast and accurate diagnostic in case of malfunction
- Possibility to control and program events by external commands and with external devices
- Graphical view of programs and climatic variables
- Ethernet port for connecting logging computer to the chamber controller
- ClimaPlus controller functions also available at the PC/Laptop with the FitoLog software pack



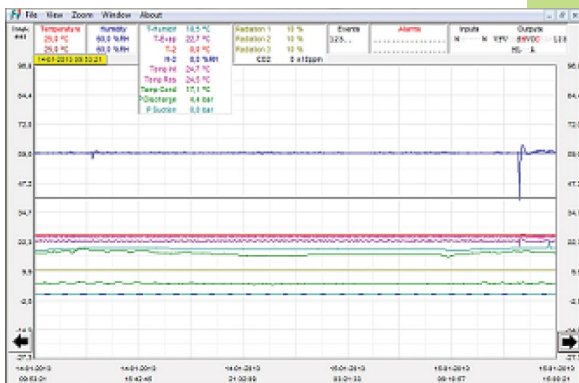
FITOLOG SOFTWARE

The FitoLog software pack is a set of applications designed to facilitate the managing, monitoring and recording of programs and data from the FitoClima chambers. It consists of 3 applications: **FitoLog**, **FitoLogView** and **FitoProgram**.



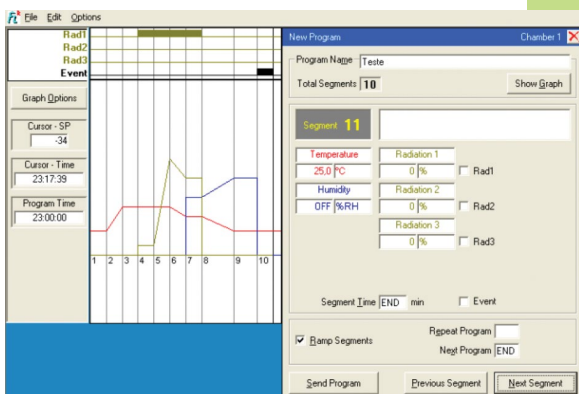
FITOLOG

Records and displays in real time all data and details related to the set-points, running variables and equipment behaviour. It also retrieves information about the active components of the chamber, running processes, errors, alarms and allows the configuration of periodic or alarm triggered remote notifications (by email or SMS, depending on existing connections and accessories).



FITOLOGVIEW

It is a working tool to process the data recorded by the FitoLog program. One can view, print and export the log contents to other file types, and analyse the data in other data management software (Excel, Star Office, Access or others).



FITOPROGRAM

This application simplifies the creation of programs and its integration on the chamber ClimaPlus controller. Up to 32 programs, each with 24 segments, can be designed and linked to create detailed environmental profiles and simulations.

RESEARCH SECURED WITH ALARMS, NOTIFICATIONS, FAST DIAGNOSTICS AND PROMPT TROUBLESHOOTING

With FitoLog it is possible to gather data from each of the chambers systems, which makes it a very useful tool to diagnose any necessary maintenance. This tool works as the “black box” of the equipment, giving Aralab technicians the necessary data to remotely carry out a fast and efficient diagnostic. All that is needed is a FitoLog file.

COMMON ACCESSORIES

PLEASE CONSULT ARALAB FOR OTHER ITEMS

FitoLog® software pack for PC/Laptops, enabling data monitoring, logging and managing operations directly on a computer

Quantum light meter integrated with the controller for managing light intensities in $\mu\text{moles}/\text{m}^2\text{s}$

CO2 monitor and controlling units

CO2 scrubber for lowering carbon dioxide below ambient levels

Dew and Mist simulation

Automatic irrigation valve

Aeration kit for Algae Research and Hydroponic cultures

External 20 litre water tank with electric pump and security valve

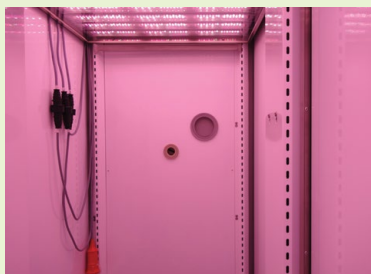
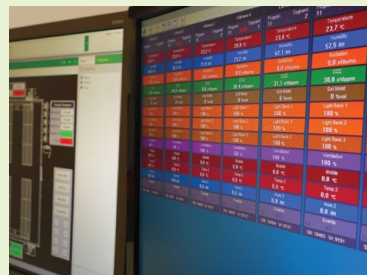
Double glazed glass doors with or without cover lid

Phenolic resins coating for Entomology/Insects rearing applications

High performance lighting kit (+1.000 $\mu\text{moles}/\text{m}^2\text{s}$) with heat extraction system

LED modules with fixed spectral distribution

LED modules with configurable spectral distribution



Features and specifications are subject to change. Aralab continuously studies ways to further develop its products to achieve better performances and overall product quality. As a result, characteristics and specifications provided in this document may be subject to changes.



Let's meet!
aralab@aralab.pt
www.aralab.pt
T: +351 219 154 960



Control the environment
Your own climate